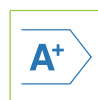




DUBAI2

APPLICATIONS

The single-LED spotlights of the Dubai2 series are specifically designed for the universal lighting of outdoor environments, since the different product versions make their use extremely versatile, from the illumination of gardens and landscape to the detailed lighting of buildings' facades. Through different configurations of the secondary optics, it can be used to achieve a variety of scenic effects such as a spotlight to illuminate interesting architectural details, or as a washer and wall washer. The mounting bracket, adjustable from 0° to 105° and rotatable by 180°, enables an easy installation. An optional spike can be mounted on the bracket for an easy in-ground installation, allowing the re-shaping of illumination according to vegetation growth. RGB version is available for scenic effects in all situations where colour is required to create an evocative atmosphere.



FEATURES

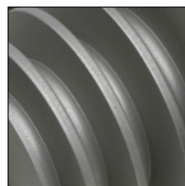
High efficiency (>120 lm/W)
ANSI compliant binning, 2 step MacAdams ellipse for each individual lot
Excellent lumen maintenance and colour stability over time
Extensive dimming range - fully dimmable, with external dimmer
Highly efficient secondary optics
IP67 protection rating
Fast connection
Long life and low maintenance costs
Ecological, no disposal restrictions



Lens



Adjustable bracket



Heat-sink



Connector

SPECIFICATIONS

Performance

LED type	High power
LED nr. and model	1x CREE XP-E o XP-G / Seoul P5II
Total lumen output (at 85°C)	Up to 220 lm
Colour temperature (white light)	2800 - 3200 - 4200 - 5500 K
Binning	2 step MacAdam ellipse
CRI	>90 (2800 - 3200 K), >80 (4200 - 5500 K)
Other colours	RGB and on request

Electrical

Supply type	Constant current
Supply value	350 mA / 700 mA
Maximum power consumption	Up to 3,6 W
Connection	M12 2/6 poles connector

Physical

Body material	Corrosion-resistant aluminium
Body finish	Anodization
Optic material	PMMA
Optic type	TIR
Screen material	6 mm thick extra-clear safety glass
Dissipation	Passive
Protection rating	IP67
Class	III
Weight	0,2 Kg
Dimensions	See technical drawing
Operating temperature range	-20 / +70 °C
MTBF (LM80)	50.000 hrs
Mounting	Any position

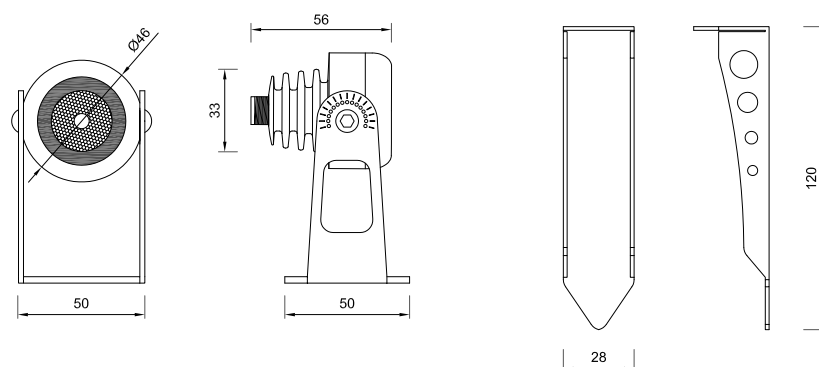
HOW TO ORDER

Model ▼	LED nr. ▼	Supply ▼	Optic ▼	Colour ▼
dB2	01	□□□	□□□	□□□
dB2 Dubai2	01 1 LED	700 700 mA (mono) 350 3x350 mA (RGB)	010 10° (mono) 021 21° (mono) 039 39° (mono) x44 10° x 44° (mono) 025 25° (RGB) 040 40° (RGB)	WW2 Warm white 2800K WW3 Warm white 3200K NW4 Neutral white 4200K CW5 Cold white 5500K RGB RGB

Order code example: **dB2-01700010WW2**

Note: not all combinations of technical features are possible, please check with our technical office at the e-mail address tecnico@futuroluce.it

TECHNICAL DRAWING



ACCESSORIES

Cables

Cable with M12 2-pole connector female/flying leads L=2 m (monochromatic)	CMP00487
Cable with M12 2-pole connector female/flying leads L=5 m (monochromatic)	CMP00488
Cable with M12 2-pole connector female/flying leads L=10 m (monochromatic)	CMP00489
Cable with M12 2-pole connector female/flying leads L=15 m (monochromatic)	CMP00490
Cable with M12 6-pole connector female/flying leads L=2 m (RGB)	CMP00482
Cable with M12 6-pole connector female/flying leads L=5 m (RGB)	CMP00483
Cable with M12 6-pole connector female/flying leads L=10 m (RGB)	CMP00484
Cable with M12 6-pole connector female/flying leads L=15 m (RGB)	CMP00485

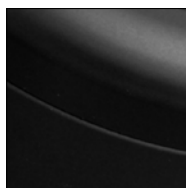
Mounting kit

In-ground adjustable spike	TRN00173
----------------------------	--------------------------

Watertight connections

IP68 Paguro 5665 Junction box - 2x2,5 sqmm - parallel connection	CMP00850
IP68 Paguro 5650/3 Junction box - 3x2,5 sqmm - parallel connection	CMP00851
IP68 Paguro 5664/20 Junction box - 4x2,5 sqmm - parallel connection	CMP00852
IP68 Paguro 5633/6 Junction box - 6x0,5 sqmm - parallel connection	CMP00853
IP68 Paguro 5663 Junction box - 3x6 sqmm - series/parallel connection	CMP00854

Finishes



Matt black
anodized aluminium
[ALL-BLK](#)



Dark brown
anodized aluminium
[ALL-BRZ](#)