



# BOLOGNA

## APPLICATIONS

The linear system Bologna is a product with a compact and pure design. With the perfect homogeneity of the luminous effect, its qualities lend this element elegance and a high aesthetic value. Thanks to its characteristics, it integrates perfectly into any context, even when switched off, and is thus suitable for illumination of every structure in which it is installed. Through different configurations of the secondary optics, it can be used to achieve a variety of scenic effects such as a wall washer to illuminate the facades and vertical surfaces, or to highlight interesting architectural details. Furthermore, can become an integrated element to create effects and light beams that highlight geometries, emphasize the space and create graphic textures. RGB version is available for scenic effects in all situations where colour is required to create an evocative atmosphere.



## FEATURES

High efficiency (>120 lm/W)
ANSI compliant binning, 2 step MacAdams ellipse for each individual lot
Excellent lumen maintenance and colour stability over time
Extensive dimming range - fully dimmable, with external dimmer
Highly efficient secondary optics
IP65 protection rating
Fast connection
Long life and low maintenance costs
Ecological, no disposal restrictions



Lens



Heat-sink



Valve



Connector

## SPECIFICATIONS

## Performance

LED type	High power
LED nr. and model	6/12/18/24/36 x Cree XP-E o XP-G/Seoul P5II
Total lumen output (at 85°C)	Up to 4300 lm
Colour temperature (white light)	2800-3200-4200-5500 K
Binning	2 step MacAdam ellipse
CRI	>90 (2700 - 3200 K), >80 (4200 - 5500 K)
Other colours	RGB and on request

## Electrical

Supply type	Constant current / constant voltage
Supply value	350 mA / 700 mA / 24 Vdc
Maximum power consumption	Up to 48 W
Connection	M12 2/4/6 pole connector

## Physical

Body material	Corrosion-resistant aluminium
Body finish	Anodization
Optic material	PMMA
Optic type	TIR
Screen material	6 mm thick extra-clear safety glass
Dissipation	Passive
Protection rating	IP65
Class	III
Weight	1 - 2 - 3 - 4 Kg
Dimensions	See technical drawing
Operating temperature range	-20 / +70 °C
MTBF (LM80)	50.000 hrs
Mounting	With mounting kit

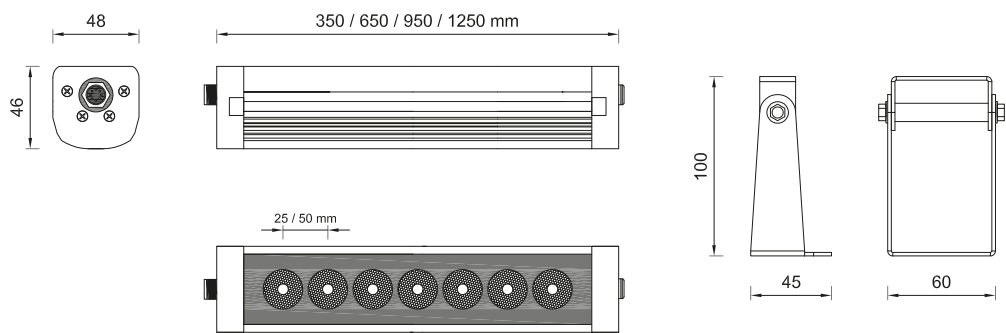
## HOW TO ORDER

Model ▼	LED nr. ▼	Supply ▼	Optic ▼	Lenght ▼	Colour ▼
b48	□□	□□□	□□□	□□□	□□□
b48 Bologna	06 6 LEDs (350 mm) 12 12 LEDs (350 or 650 mm) 18 18 LEDs (950 mm) 24 24 LEDs (650 mm) 36 36 LEDs (950 or 1250 mm)	350 3 x 350 mA (mono) 700 3 x 700 mA (mono) 724 3 x 700 mA @ 24 Vdc (mono) 324 3 x 350 mA @ 24 Vdc (RGB)	010 10° (mono) 021 21° (mono) 039 39° (mono) x44 10° x 44° (mono) 025 25° (RGB) 040 40° (RGB)	035 350 mm 065 650 mm 095 950 mm 125 1250 mm	WW2 Warm white 2800K WW3 Warm white 3200K NW4 Neutral white 4200K CW5 Cold white 5500K RGB RGB

Order code example: **b48-06350010035WW2**

Note: not all combinations of technical features are possible, please check with our technical office at the e-mail address [tecnico@futuroluce.it](mailto:tecnico@futuroluce.it)

TECHNICAL DRAWING



ACCESSORIES

Cables

Cable with M12 2-pole connector female/flying leads L=2 m (monochromatic c.v.)	<a href="#">CMP00487</a>
Cable with M12 2-pole connector female/flying leads L=5 m (monochromatic c.v.)	<a href="#">CMP00488</a>
Cable with M12 2-pole connector female/flying leads L=10 m (monochromatic c.v.)	<a href="#">CMP00489</a>
Cable with M12 2-pole connector female/flying leads L=15 m (monochromatic c.v.)	<a href="#">CMP00490</a>
Cable with M12 4-pole connector female/flying leads L=2 m (RGB colour c.v.)	<a href="#">CMP00259</a>
Cable with M12 4-pole connector female/flying leads L=5 m (RGB colour c.v.)	<a href="#">CMP00303</a>
Cable with M12 4-pole connector female/flying leads L=10 m (RGB colour c.v.)	<a href="#">CMP00370</a>
Cable with M12 4-pole connector female/flying leads L=15 m (RGB colour c.v.)	<a href="#">CMP00555</a>
Cable with M12 6-pole connector female/flying leads L=2 m (monochromatic & RGB c.c.)	<a href="#">CMP00482</a>
Cable with M12 6-pole connector female/flying leads L=5 m (monochromatic & RGB c.c.)	<a href="#">CMP00483</a>
Cable with M12 6-pole connector female/flying leads L=10 m (monochromatic & RGB c.c.)	<a href="#">CMP00484</a>
Cable with M12 6-pole connector female/flying leads L=15 m (monochromatic & RGB c.c.)	<a href="#">CMP00485</a>

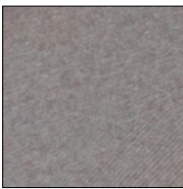
Mounting kit

Nr. 1 adjustable bracket kit	<a href="#">TRN00115</a>
------------------------------	--------------------------

Watertight connections

IP68 Paguro 5665 Junction box - 2x2,5 sqmm - parallel connection	<a href="#">CMP00850</a>
IP68 Paguro 5650/3 Junction box - 3x2,5 sqmm - parallel connection	<a href="#">CMP00851</a>
IP68 Paguro 5664/20 Junction box - 4x2,5 sqmm - parallel connection	<a href="#">CMP00852</a>
IP68 Paguro 5633/6 Junction box - 6x0,5 sqmm - parallel connection	<a href="#">CMP00853</a>
IP68 Paguro 5663 Junction box - 3x6 sqmm - series/parallel connection	<a href="#">CMP00854</a>

Finishes



Dark brown  
anodized aluminium  
[ALL-BRZ](#)



Black  
aluminium  
[ALL-BLK](#)